

RenseWAI



RenseWAI DP Adept

The small footprint RenseWAI DP Adept Lab Water system is an ideal choice for users who need up to 20 litres of Type 1 Ultrapure water or Type 3 RO based water per day.

This is an ONLINE RO system, which does not require the need for an additional reservoir.

NO RESERVOIR = ZERO CONTAMINATION

Single Integrated Combo unit, which delivers Type 1 & Type 3 RO based water, directly from potable tap water, in a single system.

Features

- The compact system produces Type 1 Ultrapure water and Type 3 RO water on demand from potable tap water directly.
- Electrical and water compartments are completely segregated, thus safer to operate.
- The system is equipped with a safeguard P Pack cartridge and a dual-column U Pack Ultra purification cartridge, to ensure optimum quality of the final product water.
- Internal P Pack cartridge further removes organics, particles and scaling ions to prevent them from fouling the RO membranes.
- RO membrane removes over 99% large molecules and particles as well as 95% ions in water.
- The automatic bypass send the RO water to the drain, if it does not meet preset quality standard.
- The RO drain water is reused / recycled to increase the water yield. It is more environmentally friendly.
- System automatically rinses a new RO membrane.
- The fully automated control system contains pre-rinse, RO membrane fouling preventing flush, RO membrane and cartridge life monitoring as well as many other programs for convenient operation.
- The pre-rinsing program starts automatically when a new RO membrane is installed so there is no need for users to set up additional cleaning procedures.
- Built-in 185/254 nm dual wavelength lamp reduces TOC level in ultrapure water.
- **No external storage tank is required, which eliminate the risk of water degradation by contaminants from the container or stored water.**
- System status and key quality parameters are clearly displayed on large LCD screen for easy system performance monitoring.





Main Applications

Ultrapure Water

- HPLC mobile phase preparation
- Preparation of reagent blank solution
- As sample diluents for GC, HPLC, AA, ICP-MS and other analytical techniques
- Preparation of buffer and culture media for mammalian cell culture
- Preparation of molecular biology reagents, etc.

RO Pure Water

- Glassware cleaning
- Washing machine for glassware
- Water bath water
- Autoclave
- Feed water to laboratory animals

Specification

Feed Water Requirements

- Feed Water – Potable Tap Water
- Feed water conductivity < 2000 $\mu\text{S}/\text{cm}$ or TDS < 1000 ppm
- Feed water pressure – (2-6) bar
- Operating temperature – (5 – 35) $^{\circ}\text{C}$
- Feed water TOC < 1000 ppb

Flow rate

- Type 3 RO based production rate @ 25 $^{\circ}\text{C}$ - 0.5 ml/min or 30 L/hr.
- Type 1 or Ultrapure Water dispensing flow rate - 0.5 ml/min or 30 L/hr.

Product Water Quality

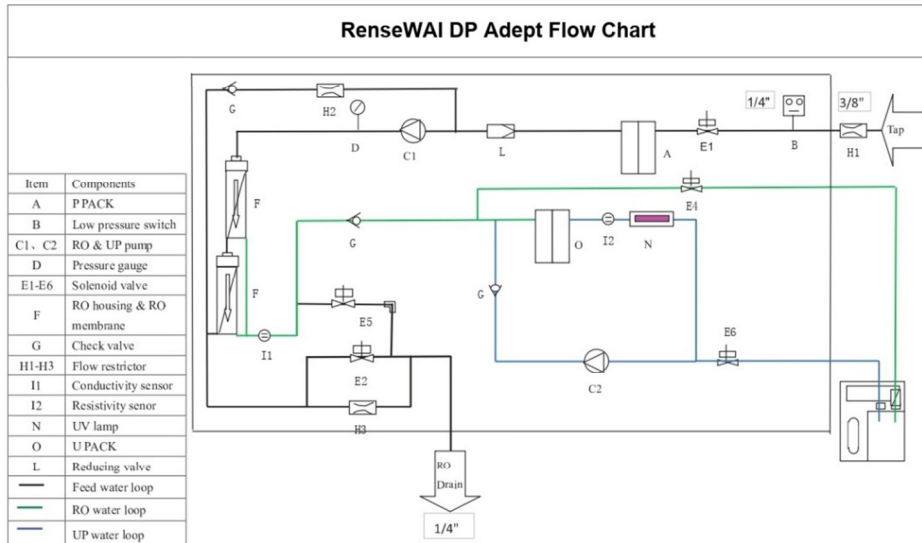
- Type 3 or RO based water quality (@25 $^{\circ}\text{C}$) > 90% Ionic rejection, when compared to the feed water conductivity
- Type 1 Ultrapure water resistivity (@25 $^{\circ}\text{C}$) – 18.2 $\text{M}\Omega\cdot\text{cm}$
- Type 1 Ultrapure water TOC < 10 ppb (If feed water TOC < 30 ppb)
- Particles in Ultrapure water of > 0.2 μm - No particles (with a 0.2 μm final filter or Bio filter unit)
- Microorganisms in Ultrapure water - < 0.01 cfu/ml (with a 0.2 μm final filter or Bio filter)
- Pyrogens (Endotoxins) in ultrapure water < 0.001 EU/ml (with a Bio filter)
- RNase in ultrapure water < 0.5 pg/ml (with a Bio filter)
- DNase in ultrapure water < 10 pg/ml (with a Bio filter)

Power

- Input Voltage - 110 - 240 VAC
- Wattage < 75 W



Flow Chart



Contents of the Set

RenseWAI DP Adept Set consists of :-

1. Main system
2. RO membrane (pre-installed inside the system)
3. P Pak cartridge
4. U Pack cartridge
5. Final Filter 0.22 micron
6. Three stage prefiltration kit (PF Kit)
(1 micron + 10 micron + Carbon Cartridge of 3 micron pore size, included inside PF Kit.
Quantity – 1 no. each)
7. External feed booster pump, with high & low pressure auto cutoff switch included.
(Included / Needed only in-case, if potable feed water pressure is less than 2 bar)

Ordering Information

Sl.No.	Description	Catalogue No.
1	RenseWAI DP Adept SET	RW0A0400EK
2	RenseWAI DP Adept UV SET	RW0A040UEK



RenseWAI

Photographs (Representative only)



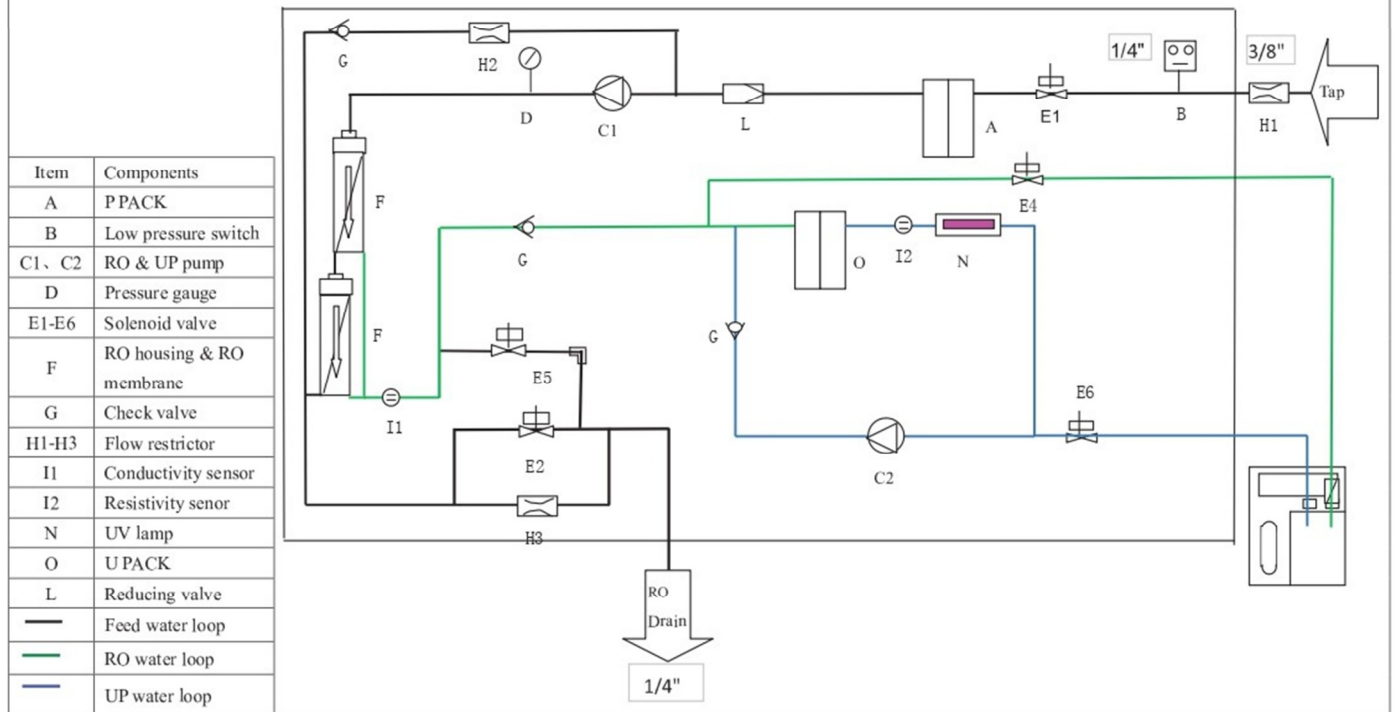
(Disclaimer – Please note photographs are for representation purpose only & can vary from the actual system)



RenseWAI is the registered trademark of M/s. Pramuk Healthcare



RenseWAI DP Adept Flow Chart



RenseWAI

